

1997

CEDAR PARK TORNADO

Deployment Statistics

Lasted a total of 2 days

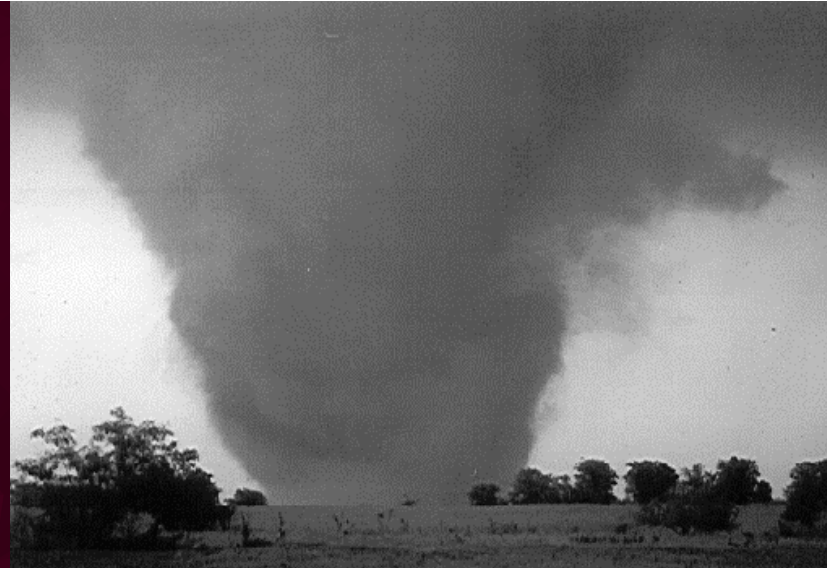
10 Personnel activated supporting the following resources:

- 1 Rescue Squad
- 1 Technical Search Team
- 1 Structural Engineer
- Communications personnel and equipment
- Medical personnel and equipment

Teams completed:

- Search of Albertson's Grocery Store and surrounding area

Type - **TORNADO**



At 3:42 p.m. on Tuesday, May 27, 1997, a tornado rated at F-5 on the Fujita intensity scale, wreaked destruction on the central Texas town of Jarrell. The tornado had sustained winds up to 261 miles per hour killing 27 people and causing an estimated \$190 million in property damages. The tornado was 3/4 of a mile wide and tore a track across the ground for 7.6 miles in Bell and Williamson County. The tornado travelled through the Double Creek Estates housing subdivision, wiping the entire neighborhood off the map and destroying 38 homes. Additionally, dozens of cars were carried more than 1/2 mile away.

The same day at 4:45 p.m., a second tornado rated at F-3 was spawned by the Jarrell tornado and touched down in neighboring downtown Cedar Park, TX. The tornado caused the collapse of an Albertson's grocery store and then tore through the Buttercup housing subdivision. TX-TF1 deployed personnel and equipment to Cedar Park, TX, to assist in the search of the Albertson's grocery store. An already close-by TX-TF1 member set up a command post in a nearby fast food restaurant and began a structural assessment. Furthermore, they began organizing exterior searches. Upon arrival on scene, additional TX-TF1 personnel utilized search cameras and listening devices, reducing the time spent searching for victims by an estimated 14 hours. The task force completed all searches by the morning of May 28 and returned to College Station, TX, later that day. This was the first deployment for TX-TF1.

TX-TF1 deploys for the 1st time after tornadoes caused destruction in Central Texas



May 27-28