

2013

OKLAHOMA TORNADOES

Deployment Statistics

Lasted a total of 4 days

87 Personnel activated supporting the following resources:

- Type-I US&R Task Force
- 4 Water Rescue Squads
- FEMA US&R IST
- FEMA US&R IST Cache

Type - **TORNADO**

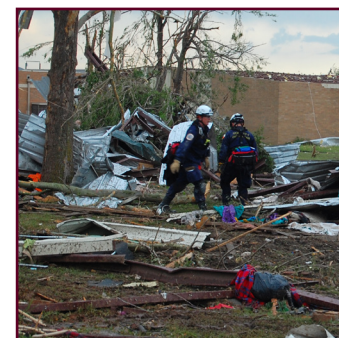


On the afternoon of May 20, 2013, an EF-5 tornado struck the city of Moore, Oklahoma. With winds upwards of 210 miles per hour, the tornado killed 23 people, injured 377, and caused a 17 mile long and 1 mile wide path of destruction.

On May 20, at 6:00 p.m., FEMA activated 3 US&R Task Forces, the FEMA US&R Red IST, and the FEMA US&R Central IST Cache, as well as placed 1 team on alert. To support this deployment, TX-TF1 mobilized a Type-I US&R Task Force, 1 IST Structure Specialist to support the RED IST, and 6 Support Specialists to support the Central IST Cache.

Upon arrival, TX-TF1 conducted search operations and debris removal in areas around the City of Moore. Some of these searches included basements, cellars, and secured damaged structures. In the first operations period, TX-TF1 completed their assigned search area of 499 structures. In addition, a HR Canine Team supported Oklahoma Task Force 1 (OK-TF1) while searching the Plaza Towers Elementary School to ensure all personnel were recovered.

By the evening of May 22, the mission for the FEMA US&R Task Forces was complete and the task forces began to demobilize. TX-TF1 departed Moore, Oklahoma, in the early morning of May 23 and arrived in College Station, Texas, that afternoon.



May 20-23

EF-5 tornado strikes the city of Moore, Oklahoma, killing 23 people