

1999

HURRICANE BRET

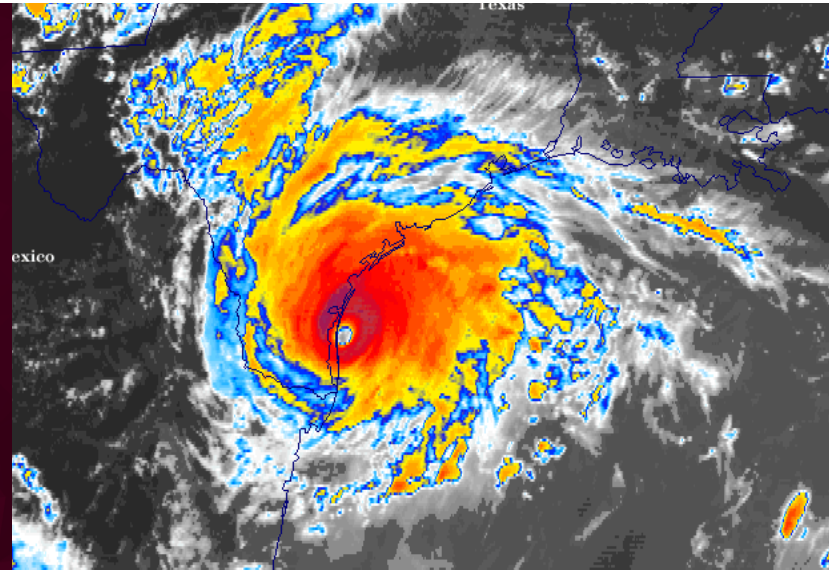
Deployment Statistics

Lasted a total of 2 days

70 Personnel activated supporting the following resources:

- Type-I US&R Task Force

Type - **HURRICANE**



On August 21, 1999, TX-TF1 was activated by Governor's Division of Emergency Management (GDEM) to prepare for a Texas landfall of Hurricane Bret. The task force was forward deployed to the Alamodome in San Antonio and began planning operations once on scene. On the afternoon of August 22, Hurricane Bret downgraded from a Category 4 status to a Category 3 status as it made landfall on Padre Island, TX. Within 24 hours of landfall, Hurricane Brett weakened and became a tropical depression eventually dissipating over northern Mexico.

Upon making landfall, Hurricane Bret brought a 5-7 foot storm surge, along with substantial beach erosion caused by prolonged intense waves. As Hurricane Bret moved slowly inland, it produced torrential rains, amounting to around 13 inches in central Kenedy County, with other locations reporting over 10 inches. Hurricane Bret spawned one tornado in Arkansas County which destroyed an RV and a barn, and uprooted trees. Additionally, two other tornadoes were reported in southeast Texas.

Kenedy County was among the greatest affected, but due to the low population density and the large number of people evacuated prior to the storm, there were no calls for assistance from local officials and TX-TF1 was not deployed to the affected area. TX-TF1 demobilized the following day on August 22, 1999.



August 21-22