

# 2005

## HURRICANE EMILY

Hurricane Emily makes landfall in Mexico as a Category 3 Hurricane

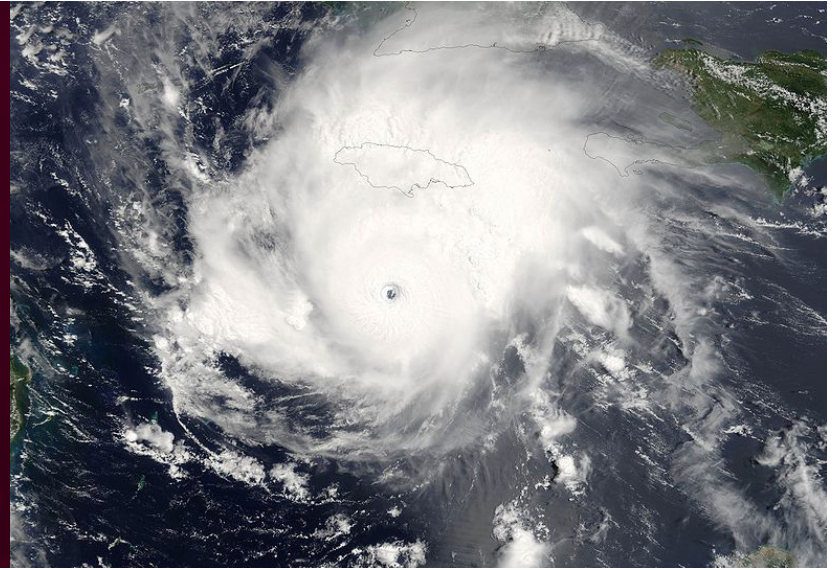
### Deployment Statistics

Lasted a total of 3 days

27 Personnel activated supporting the following resources:

- Type-III US&R Task Force with Water Capabilities
- 1 ESF-9 Coordinator
- 1 ESF-9 Liaison Officer

Type - **HURRICANE**



On July 18, TX-TF1 was activated by GDEM in advance of Hurricane Emily's landfall along the South Texas Gulf Coast. As a result, a Type-III US&R Task Force with a water capability was mobilized and staged in College Station, TX. Later that day, Hurricane Emily made landfall in Mexico as a Category 3 Hurricane. Portions of Texas experienced tropical storm force winds with gusts as high as 65 miles per hour, and rainfall of up to 5 inches parts in of South Texas. Additionally, a total of 8 tornadoes spawned from the remnants of Hurricane Emily damaging surrounding homes.

The following day, TX-TF1 departed College Station at 7:00 a.m. for the South Texas area, where they prepared to respond to any calls for assistance. The Type-III US&R Task Force was equipped to respond to flooding and swiftwater rescue events, provide command and control support, and augment the communications capabilities of local emergency responders. TX-TF1 also dispatched personnel to the SOC in Austin and the McAllen Disaster District Committee (DDC).

Late Wednesday, July 20, TX-TF1 received their demobilization orders from GDEM. TX-TF1 returned to their headquarters in College Station the following day on July 21 and demobilized, allowing all members to return home.



July 18-21