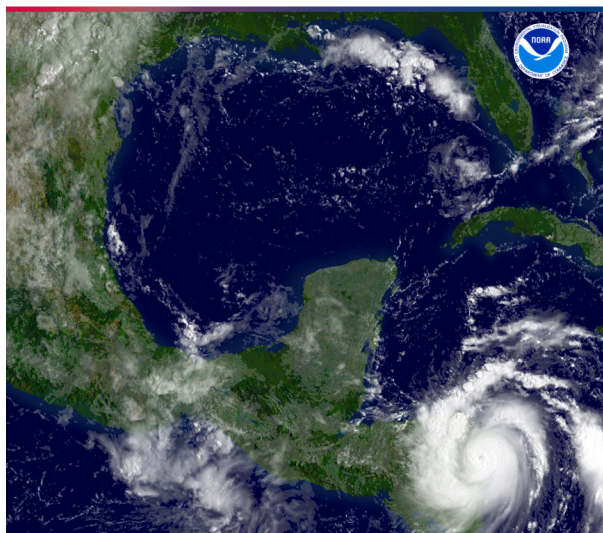
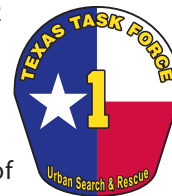


## HURRICANE FELIX EXPECTED TO IMPACT TEXAS



Tropical Storm Felix strengthened into a category 2 hurricane on September 1, 2007, with the center of the storm approximately 50 miles north of Aruba, Mexico. By September 2nd, Tropical Storm Felix's projected path took it north through the Caribbean and showed potential for landfall on the Yucatan peninsula with a potential of strengthening upon re-entering the Gulf of Mexico.



On September 3rd, the Governor's Division of Emergency Management (GDEM) directed that Texas Task Force 1 (TX-TF1) begin planning for the potential landfall of Hurricane Felix as a category 2 or 3 storm. Weather predictions at the time indicated the storm might accelerate its northern direction upon reaching the warm waters of the Gulf of Mexico, which would force an acceleration of emergency plans and evacuations.

That same day, at the headquarters for TX-TF1 in College Station, command and planning personnel began to develop potential deployment models and rosters based on available resources. The TX-TF1 command and planning staff used this time to apply lessons learned from the previous four months of statewide flooding and swift water incidents.

## Deployment Statistics

- This incident involved 2 days of command level planning by TX-TF1 personnel based at College Station, TX.

