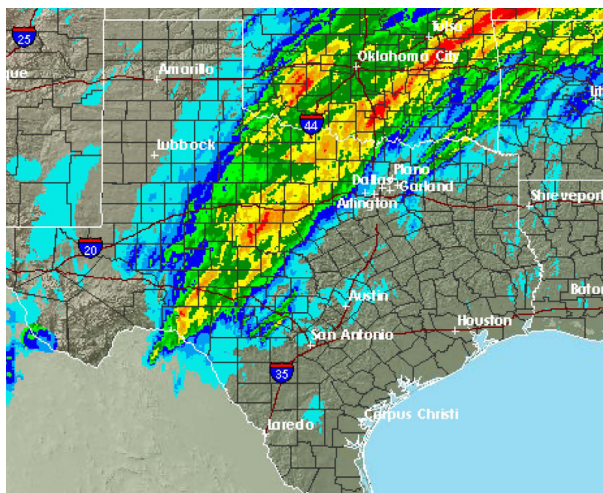


## SEVERE WEATHER AND TORNADO ACTIVITY PREDICTED ACROSS CENTRAL TEXAS

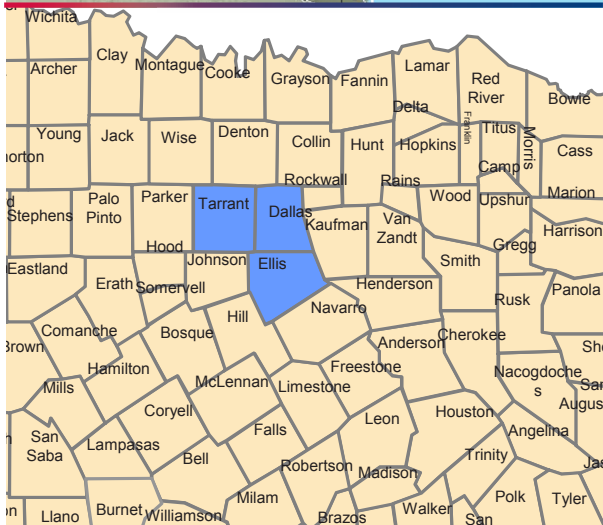


On March 17th, 2008, Texas Task Force 1 (TX-TF1) was activated by the Governor's Division of Emergency Management (GDEM) to prepare for severe weather and possible tornados across central Texas. The task force mobilized and pre-staged a Type I US&R team at the TX-TF1 College Station headquarters. TX-TF1 also mobilized and staged six water rescue boat teams in their respective home jurisdictions.



The National Weather Service (NWS) predicted severe weather and possible tornado activity along the Interstate 35 corridor from Laredo to the Oklahoma border, moving eastward through the afternoon of the March 18th.

On the morning of March 19th, after the threat of tornados or flooding across Texas had subsided, GDEM released all TX-TF1 personnel and boat teams from standby status.



### Deployment Statistics

#### • Incident involved 80 personnel deployed for 3 day

##### Type I US&R Task Force

- 4 Rescue squads
- 2 Technical search teams
- 4 Canine search teams
- 2 Structural engineers
- Command personnel
- Communications personnel and equipment
- Hazardous materials personnel and equipment
- Medical personnel and equipment
- Logistics personnel and equipment

#### • Incident involved 30 personnel on standby for 3 day

##### 6 Water Rescue Teams

- 2 Teams staged in the Austin area
- 2 Teams staged in the San Antonio area
- 2 Teams staged in the Ft. Worth area
- 2 ESF-9 Coordinators assigned to the State Operations Center
- ESF-9 Coordination Center in College Station was activated for this deployment



A member of The

**TEXAS  
A&M  
SYSTEM**