

2010

JANUARY FLOODING

Severe weather and heavy rain activity causes flooding between San Antonio and Corpus Christi

Deployment Statistics

Lasted a total of 4 days

58 Personnel activated supporting the following resources:

- 8 Water Rescue Squads
- 3 Water Rescue Managers
- 8 Helicopter Search and Rescue Technicians
- 2 Helicopter Search and Rescue Technician Managers
- 1 ESF-9 Coordinator
- ESF-9 Coordination Center

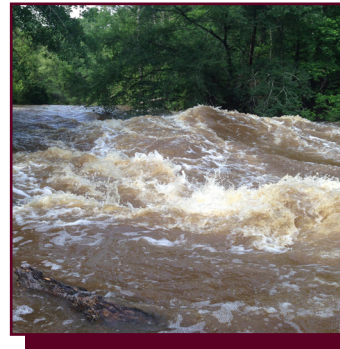
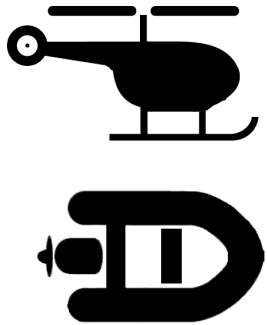
Type - **RAIN**



At approximately 10:30 a.m. on January 13, 2010, TX-TF1 was activated by TDEM to prepare for severe weather and heavy rains across Central Texas. The NWS predicted severe weather and heavy rain activity along the Interstate 37 corridor from San Antonio to Corpus Christi, moving eastward through the afternoon of January 14 and continuing into the morning of January 16. As a result, TX-TF1 mobilized 8 Water Rescue Squads and 3 Water Rescue Managers and staged 2 teams and 1 manager in Austin, 4 teams and 1 manager in San Antonio, and 2 teams and 1 manager in College Station. Additionally, 8 HSARTS and 2 HSART Managers supporting 4 UH-60 Blackhawk helicopters were staged in Austin and San Antonio with 4 HSARTs and 1 Manager in each location. Finally, TX-TF1 activated 1 ESF-9 Coordinator to provide support at the SOC and set up the ESF-9 Coordination Center in College Station, Texas.

All managers that were mobilized helped to provide command and control across the state for TX-TF1 resources. All TX-TF1 teams and personnel were on standby and ready to respond at a moment's notice.

On the afternoon of January 16, after the threat of flooding across Texas had subsided, TDEM demobilized all TX-TF1 resources.



January 13-16