

2007

HURRICANE FELIX

Hurricane Felix tracks towards Texas

Deployment Statistics

Lasted a total of 3 days

2 Personnel activated supporting the following resources:

- Command Personnel

Type - **TROPICAL STORM**

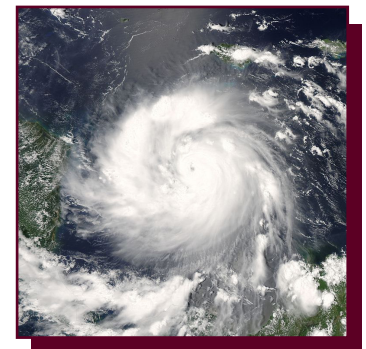
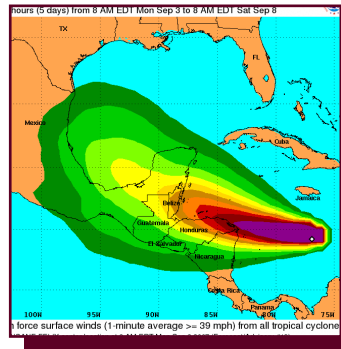


Tropical Storm Felix strengthened into a Category 2 Hurricane on September 1, 2007, with the center of the storm approximately 50 miles north of Aruba, Mexico. By September 2, projections showed Tropical Storm Felix would make its way through the Caribbean and make landfall on the Yucatan Peninsula. Models also demonstrated that after landfall, Felix would strengthen upon re-entering into the Gulf of Mexico.

On September 3, GDEM directed that TX-TF1 begin planning for the potential landfall of Hurricane Felix as a Category 2 or 3 Hurricane. Weather predictions at the time indicated the storm might accelerate its northern direction upon reaching the warm waters of the Gulf of Mexico, which would force an acceleration of emergency plans and evacuations.

That same day, at the headquarters for TX-TF1 in College Station, command and planning personnel began to develop potential deployment models and rosters based on available resources. The TX-TF1 command and planning staff used this time to apply lessons learned from the previous 4 months of statewide flooding and swiftwater incidents.

As the days progressed, the projected path continued to move south. Hurricane Felix made landfall on September 4, 2007, just south of the border between Nicaragua and Honduras, causing few issues for Texas. As a result, no additional resources were requested and command personnel were demobilized the following day.



August 14-17