

2010

HURRICANE EARL

Deployment Statistics

Lasted a total of 5 days

4 Personnel activated supporting the following resources:

- FEMA US&R IST
- FEMA US&R IST Cache
- ESF-9 Coordination Center

Type - **HURRICANE**

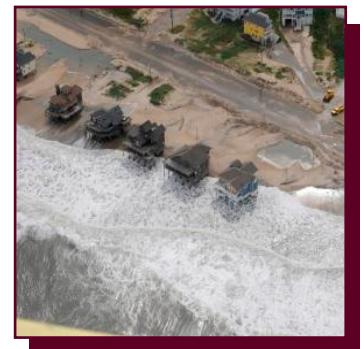
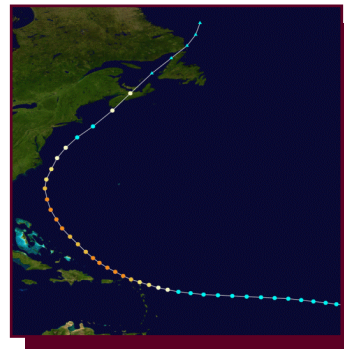


Hurricane Earl formed from a tropical wave to the west of the Cape Verde Islands on August 25, 2010. The storm headed west and reached tropical storm intensity within hours. The storm continued to develop over the next few days, alerting FEMA. As a result, on September 1, 2010, in preparation for Hurricane Earl, FEMA activated and forward deployed FEMA US&R Task Forces. In order to support this deployment, FEMA also activated the FEMA US&R IST and requested that TX-TF1 personnel assist with staffing. Two members of TX-TF1 were requested by FEMA to forward deploy with the FEMA US&R IST which was staged in Boston, Massachusetts. Additionally, FEMA also activated the FEMA US&R IST Cache maintained by TX-TF1 and 2 support specialists. The FEMA US&R IST Cache and personnel mobilized and were en route to Memphis, Tennessee, at 3:00 p.m. on September 1 and arrived in Memphis at 3:00 a.m. on the morning of September 2.

Hurricane Earl developed into a strong hurricane which took an unusual northeast track towards the Atlantic and did not pose a threat to the continental United States. As a result, on September 5, IST personnel and all deployed task forces demobilized and returned home.



FEMA



September 1-5